

# **Georgia Tucker Fine Arts Hall**

## **Technical Specifications**

### **Mailing Address**

Central Piedmont Community College  
P. O. Box 35009  
Charlotte, North Carolina 28235-5009

### **Physical Address**

2800 Campus Ridge Road  
Matthews, NC 28105

### **Shipping Address**

1325 East 7<sup>th</sup> Street  
Charlotte, North Carolina 28204

### **Telephone Information**

Box Office ..... (704) 330-6534  
Technical ..... (704) 330-6846  
Information, Bookings & Administration ..... (704) 330-6840  
Fax ..... (704) 330-6930

## What this technical packet contains

The purpose of this material is to orient the user to the specifics of the facility and equipment in the Georgia Tucker Fine Arts Hall on the Levine Campus of Central Piedmont Community College. This packet is not exhaustive in its resources. However, it should provide the reader with enough reference material to accurately plan his or her event.

In this document you will find tables and diagrams describing the space and its equipment which should also include a scale drawing of the various spaces. If your event requires more information than is included here, please contact the Technical Director (front page, last page contact info.) of the Performing Arts Center with your request.

### Lighting Information

#### **Instruments –**

14	Phillips SL Bar 620
18	Phillips SL Par 155 Zoom
6	Phillips PL Profile I (18-34)
6	Phillips PL Profile I (22-44)

#### **Control Consoles –**

ETC ELEMENT 2

### Sound Information

**Console –** Soundcraft Si Performer 2

#### **Arrays – Yamaha (each side)**

2 Nexo Geo M620  
1 Nexo Geo M6B

#### **Sound/Media Equipment**

1	Denon DN-500BD MKII - Blu-Ray, DVD, CD/SD/USB
1	Tascam CD-500B CD player

#### **Communication System – Clear-Com**

Dual channel  
Wired Stations – Light console, sound console, USR, USL, Backstage Right

#### **AV**

1	Christie D13WU-HS Projector - 12,000 lumens
1	Da-Lite Screen

#### **SFX**

Hazer's and Foggers are only permitted to be used in the venue with written approval from Performance Facilities. An application must be submitted four weeks in advance through the theater to the Fire Marshal and approved before it can be allowed. \*Additional cost of Fire, Security and Electrician Personnel applies. Dry Ice may be used with a three week approval time and no additional expense.

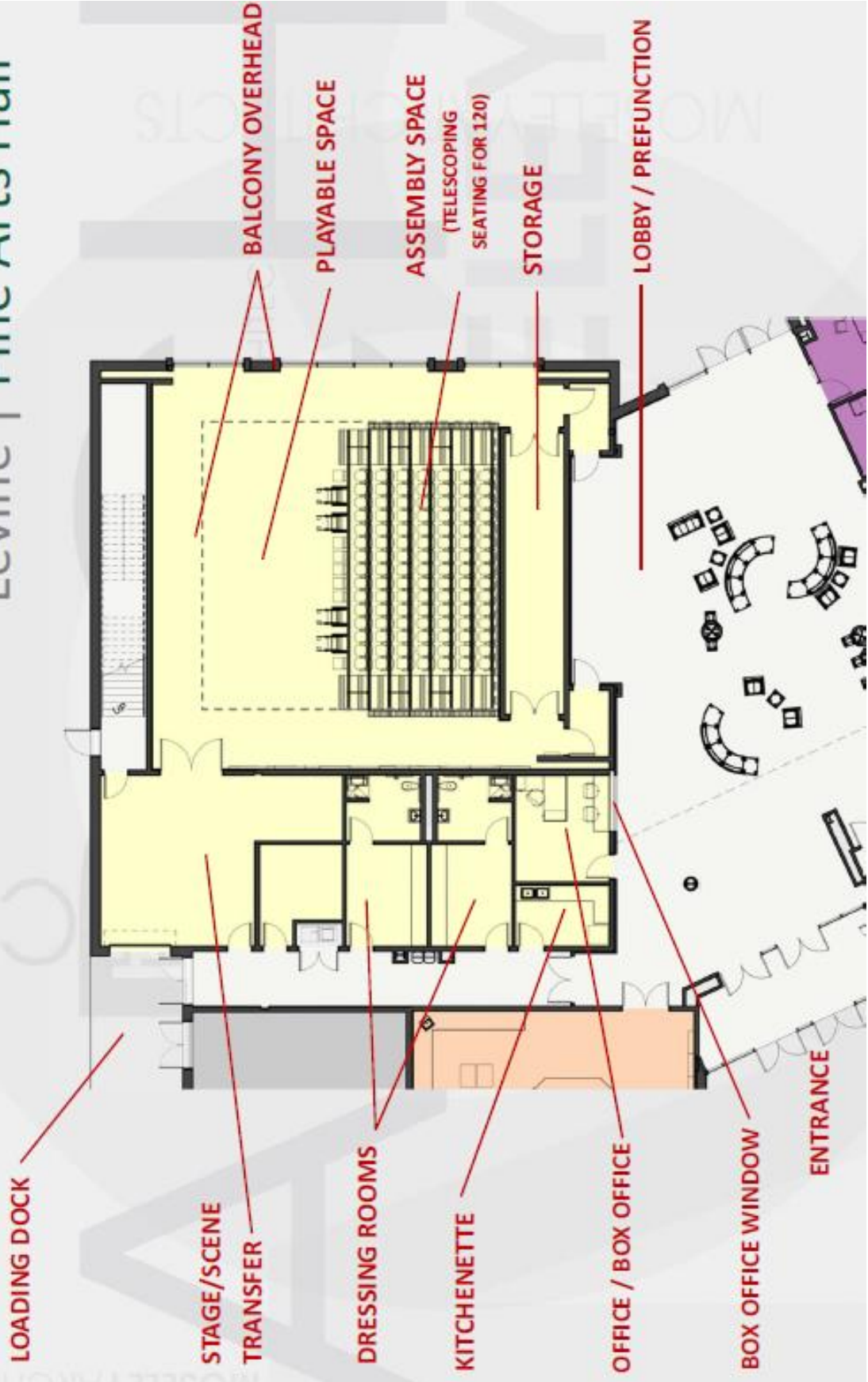
**Miscellaneous**

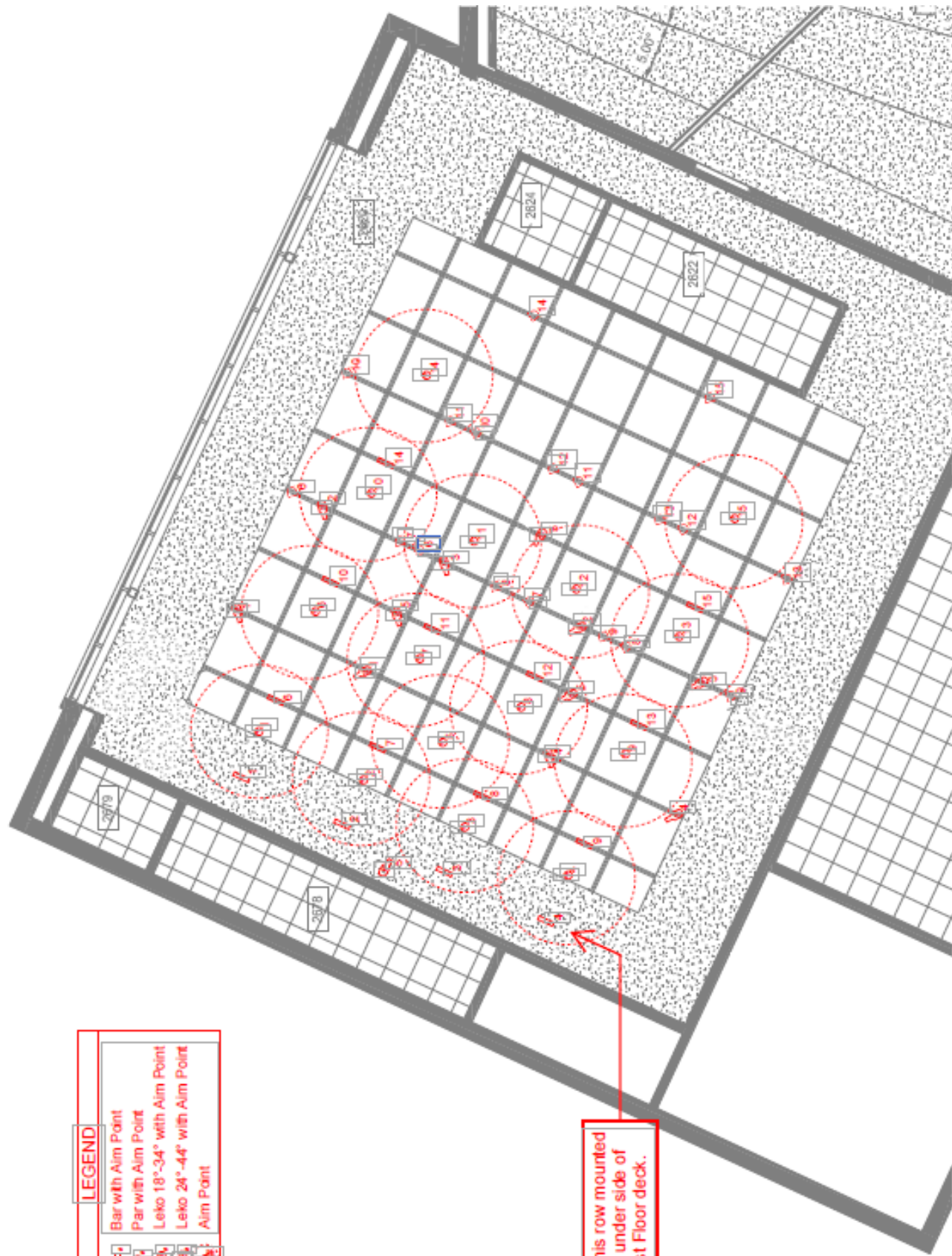
- ◆ Duofloor Dance floor
- ◆ Piano – Boston UP-126E upright

**Full Time Staff**






Dawn Cloutier	Director of Operations	(704) 330-6185
Stephen Lancaster	Technical Director	(704) 330-6846
Lorrie Sebold	Box Office Coordinator	(704) 330-6841
Renee Davis	Housekeeping Attendant	(704) 330-6532

# Levine | Fine Arts Hall





**LEGEND**

-  Bar with Aim Point
-  Par with Aim Point
-  Leko 18'-34" with Aim Point
-  Leko 24'-44" with Aim Point
-  Aim Point

This row mounted to under side of 1st Floor deck.